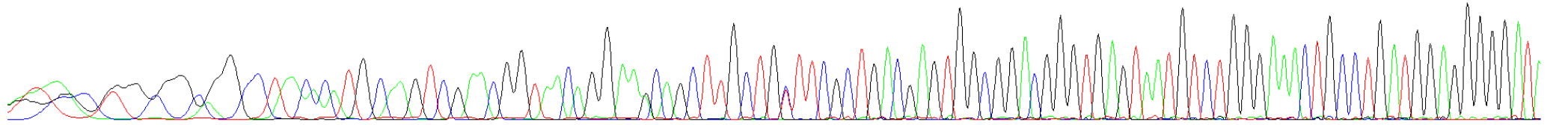
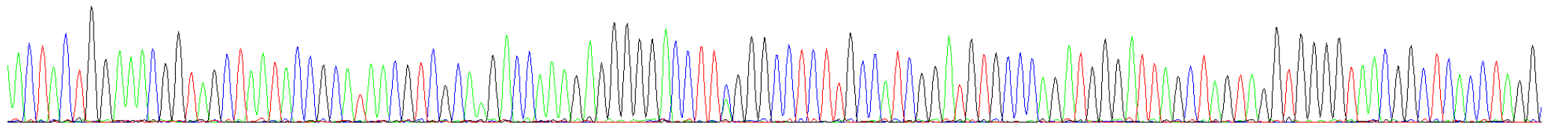


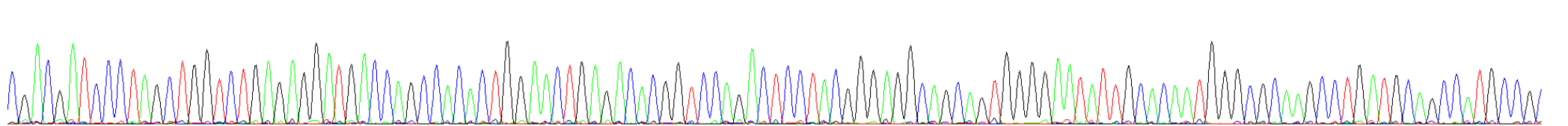
10 20 30 40 50 60 70 80 90 100 110 120  
NNN NNN NG G NG G CAG G CC T A CACA T G CAA G T C G AAC GG T AAC A G G AAG CAG C T T G C T G C T T C G C T G AC GAG T G GC GG AC G GG T G AG TAA T GT C T GGG AAA CT G CC T GAT GG AG GGG G ATA



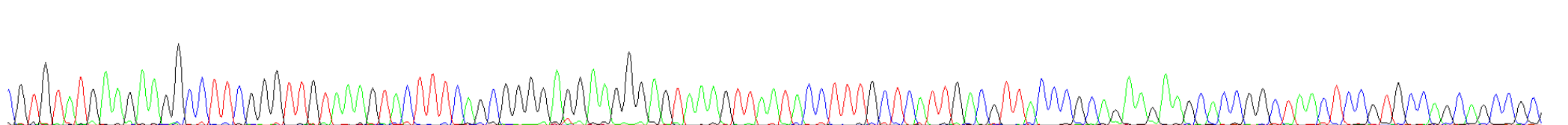
130 140 150 160 170 180 190 200 210 220 230 240  
ACTACTGGAAACGGTAGCTAATACCGCATAACGTCGCAAGACCAAAGAGGGGGACCTTCGGGCCTCTTGCCATCGGATGTGCCAGATGGGATTAGCTAGTAGGTGGGGTAACGGCTCACCTAGG



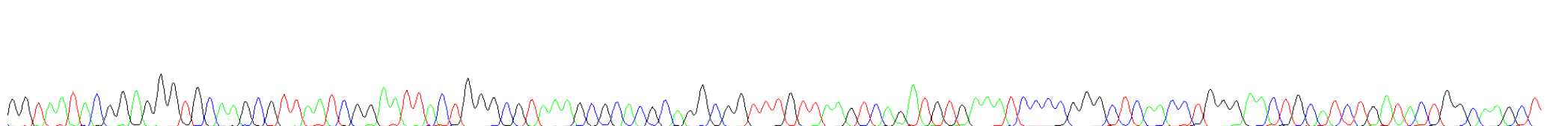
250 260 270 280 290 300 310 320 330 340 350 360 370  
CGACGATCCCTAGCTGGTCTGAGAGGATGACCAGCCACACTGGAAGTGAACACGGTCCAGACTCCTACGGGAGGCAGCAGTGGGGAATATTGCACAATGGGC GCAAGCC T GATGCAGCCATGCCG



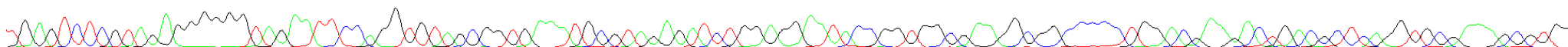
380 390 400 410 420 430 440 450 460 470 480 490  
CGTGTATGAAGAAGGCCTTCGGGTTGTAAAGTACTTTTCAGCGGGGAGGAAAGGAATAAAGTTAATACCTTTGCTCATTGACGTTACCCGAGAAAGAACCCGGCTAACTCCGTGCCAGCAGCCGC



500 510 520 530 540 550 560 570 580 590 600 610 620  
GGTAATACGGAGGGTGC AAGC GTTAATCGGAATTACTGGGCGTAAAGCGCA CGCAGGC GGTTTTGTTAAGTCAGATGTGAAATCCCCGGGCTCAACCTGGGAACTGCATCTGATACTGGCAAAGCT



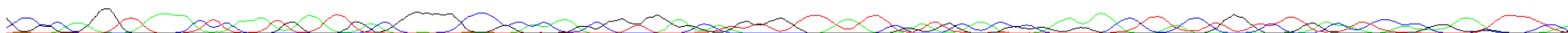
630 640 650 660 670 680 690 700 710 720 730 740  
TGAGTCTCGTAGAGGGGGGTAGAATTCCAGGTGTAGCGGTGAAATGCGTAGAGATCTGGAGGAATACCGGTGGCGAAGGCGGCCCCCTGGACGAAGACTGACGCTCAGGTGCGAAAAGCGTGG



750 760 770 780 790 800 810 820 830 840 850 860  
GGAGCAAACAGGATTAGATACCCCTGGTAGTCCACGCCGTAAACGATGTCGACTTGGAGGTTGTGCCCTTGA GCGTGGCTTCCGGAGCTAACGCGTTAAGTTCGACCGCCCTGGGGAGTACGG



870 880 890 900 910 920 930 940 950 960 970  
CCGCAA GGTTAAAACTCAATGAAATTGACGGGGGCCCGCACAA GCGGTGGAGCATGTGGTTTAAATTCGATGCAACGCGAAGNTCTTACNNGTCTTGACATCCACN G AAGTTTCA



980 990 1000 1010 1020 1030 1040 1050  
GAGATGGAAATGTTGCTTCGGGACN GTGAGANA GNGCTGCATG NCTGTCGTCAGCTC G N N NTG AAA TG T N N

